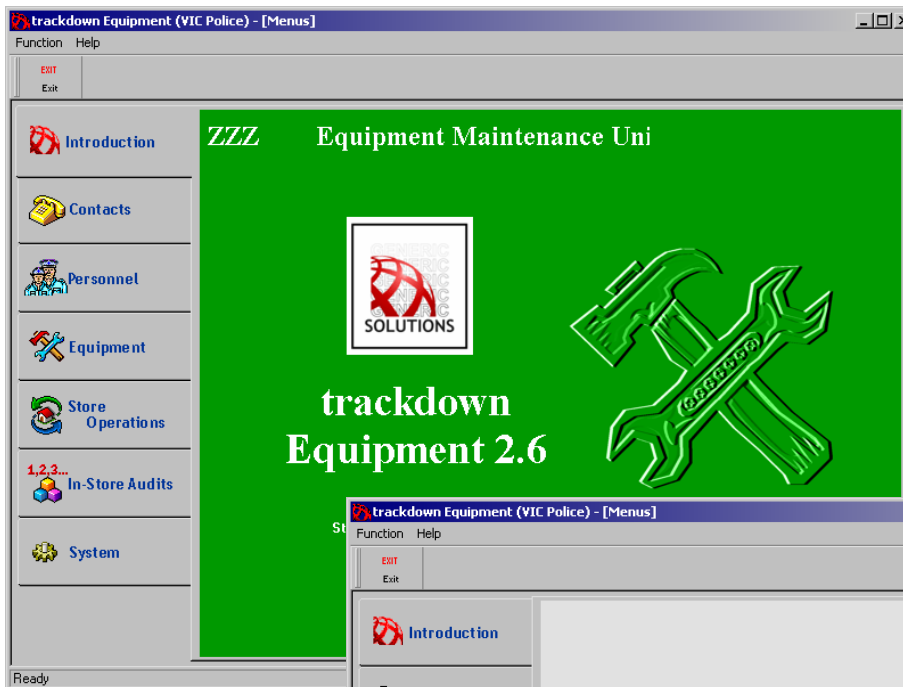




trackdown Equipment

This Windows™ application was developed for the management of Equipment. This could be in the daily operations at a Police Weaponry or handling tools in a tool crib central to a manufacturing facility. It may also be used in keeping track of fixed assets of any physical nature.

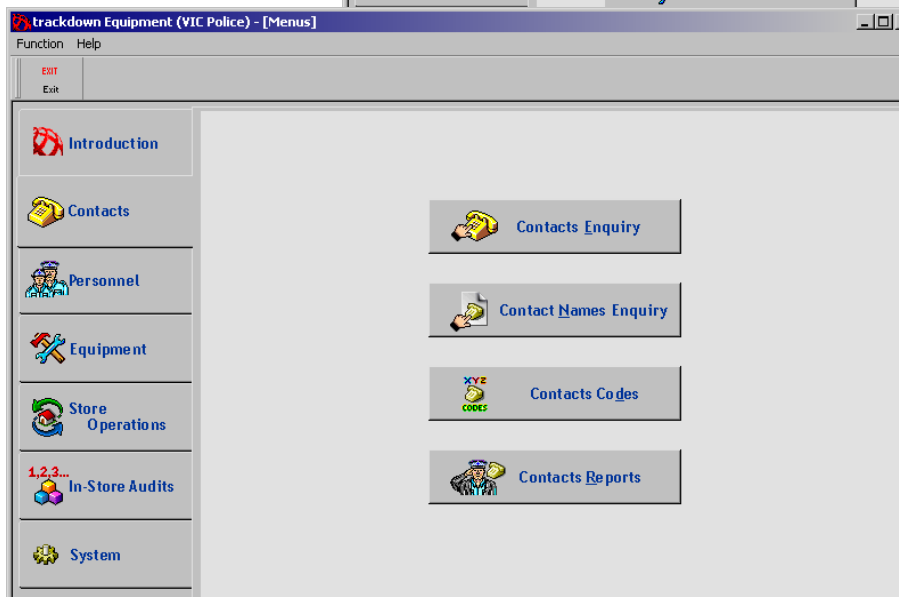
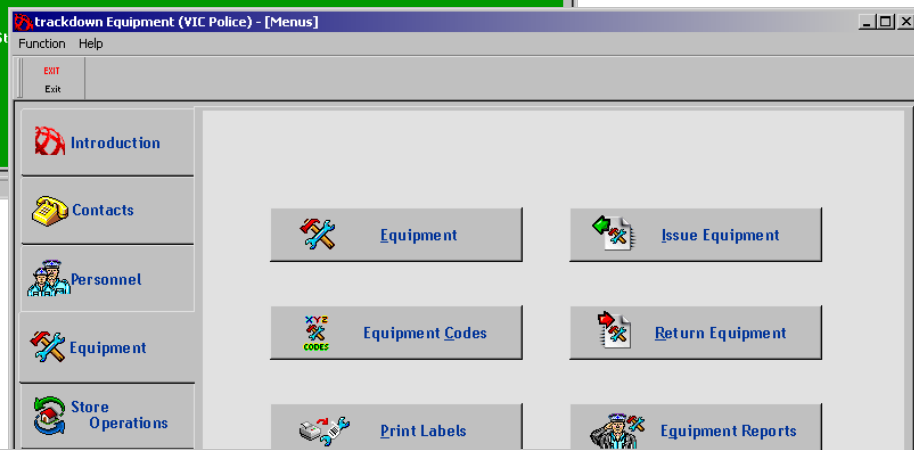


This Client/Server application uses a powerful relational database and makes the best use of barcode technology. It is extremely fast and flexible.

The Main Menu

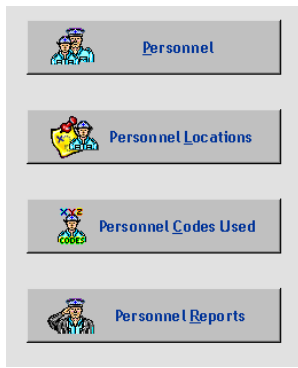
The Main Menu includes various tab-style menus for easy selection. Other menus may be configured for different user groups.

Equipment
Provides the Issue and Returns windows.



Contacts

Vendors of equipment, service companies ... external contacts of various types are maintained using this comprehensive contacts module.



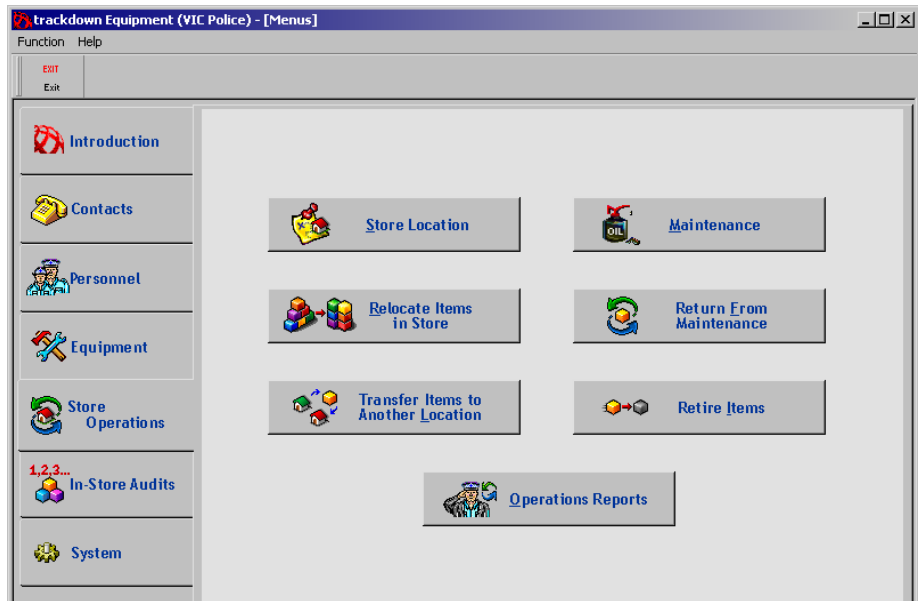
Personnel

Equipment is issued to your Personnel. The facilities exist for the Personnel details to be imported regularly from your central Payroll or HR database if you can arrange for those details to be exported. They may also be maintained entirely separately here.

Store Operations

Maintaining items of equipment or disposing of them when they may no longer be safely used are critical functions supported by trackdown Equipment.

You may transfer items from one location to another in the store by use of the hand held computer optional sub-system or you may do it manually with the Transfer module available in Store Operations.

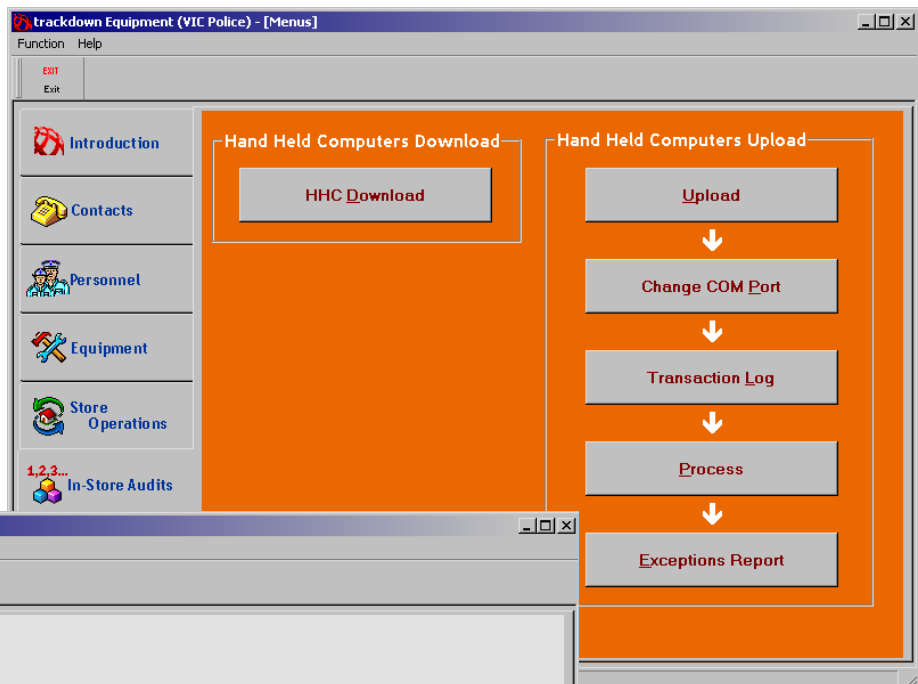


In-Store Audits

This menu provides for the processing of audit data using a Hand Held Computer.

Built-in Report Writer

You can build your own reports, run them, export data in most formats. The system has a built in pdf writer and you can email reports easily with the pdf file attached.



Supervisor's Control

The supervisor may access the Parameters and Utilities to configure Security options and system defaults.

Barcode Technology



Place small barcode labels designed for long service on each item of equipment and scan these for store operations and movements.



Reports

This application includes a number of complex reports including receipts and profile reports which have all been developed using the built-in report writer. It is easy to amend these to suit your requirements and to add new reports, or to export your data. And since the data is held in an industry standard database, access to the data is available through the leading spreadsheets and report writers.

Contacts Report

Provides basic information on contacts – the type of relationship and how they may be reached.

Personnel Report

Offers details on personnel, such as their rank, the branch they are located at, a run down on their qualifications with respect to the equipment usage & the dates for a performance review.

Personnel Report by Location

Shows a listing of personnel arranged by location.

Issue Equipment Receipt

One or more copies of a receipt may be printed upon release of equipment to an officer.

Return Equipment Receipt

A receipt may also be created when equipment is returned to the Store by an officer.

Equipment Register

Shows a record of every item of equipment, including their current status.

Equipment On Issue By Personnel

A report is produced for each officer that relates every item of equipment on issue to him at that moment in time.

Transaction History By Personnel

Shows a complete history of equipment movements by that officer/member.

Equipment Barcode

This is a listing of equipment with their respective barcodes and location barcode values.

Transfer Equipment Pick List

A report on equipment set for transfer to another branch office.

Equipment Pick List For Maintenance

Shows the equipment about to be committed for maintenance.

Maintenance Pro Forma Report

Shows equipment submitted for maintenance and allows for a description of maintenance to be written and the expected return date

Equipment Pick List For Retirement

Indicates the equipment set for imminent retirement.

Equipment Retired Report

Shows those retired items by date.

Upload Report

Describes what items were scanned using the Hand-Held computer.

Store Operations Report

Shows Barcode Number, Model, Serial No., Status and Date, Store Location and if on issue, person Issued To.

Transaction Log

Shows details of all transactions made using the Hand Held Computer.

Exceptions Report

Shows all discrepancies found in an audit of the Equipment Store.